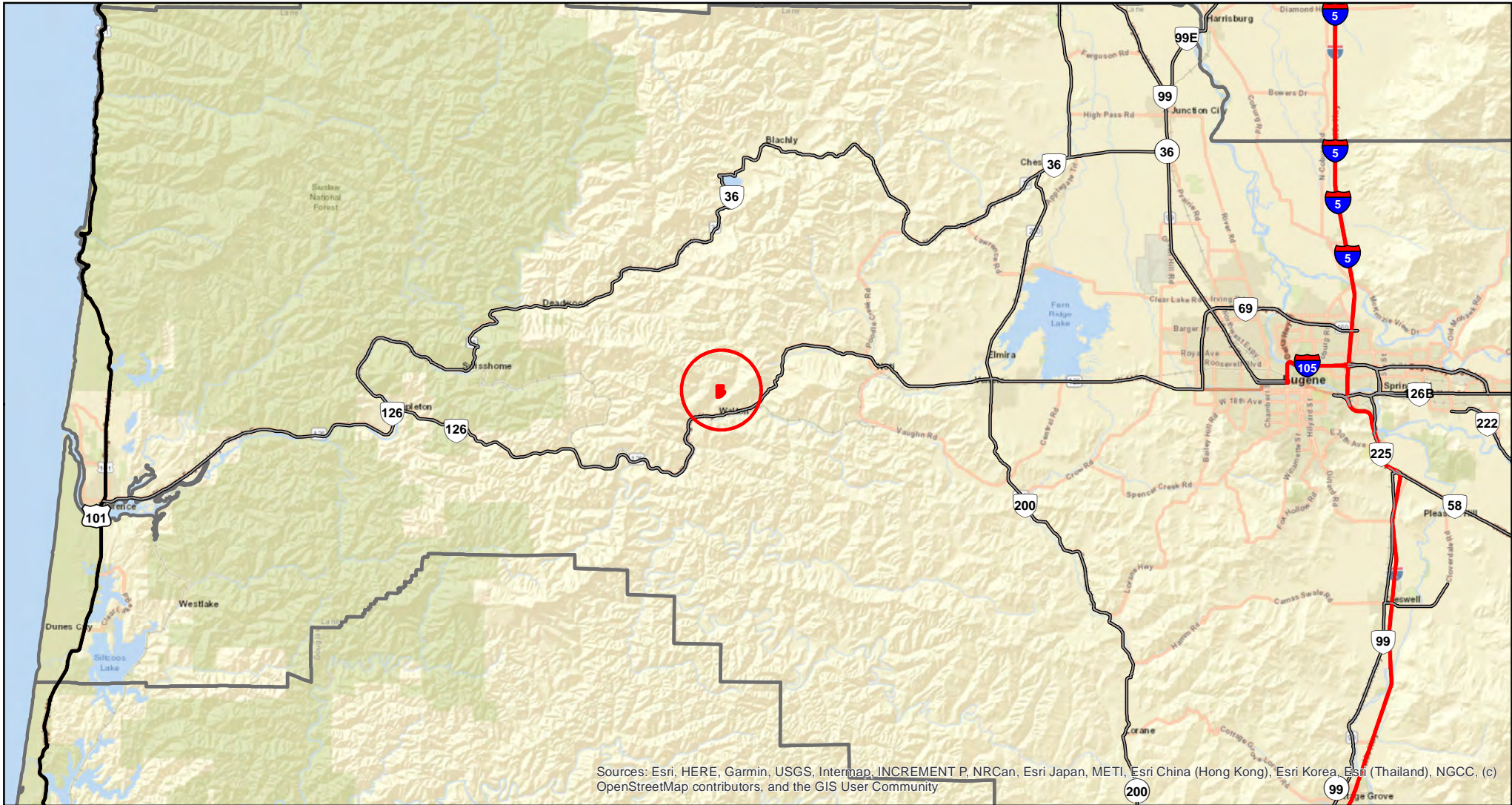


**NELSON MT. ROAD**  
**TL200, Section 31, T17S, R7W**  
**Lane County**  
**(74.82 Acres)**

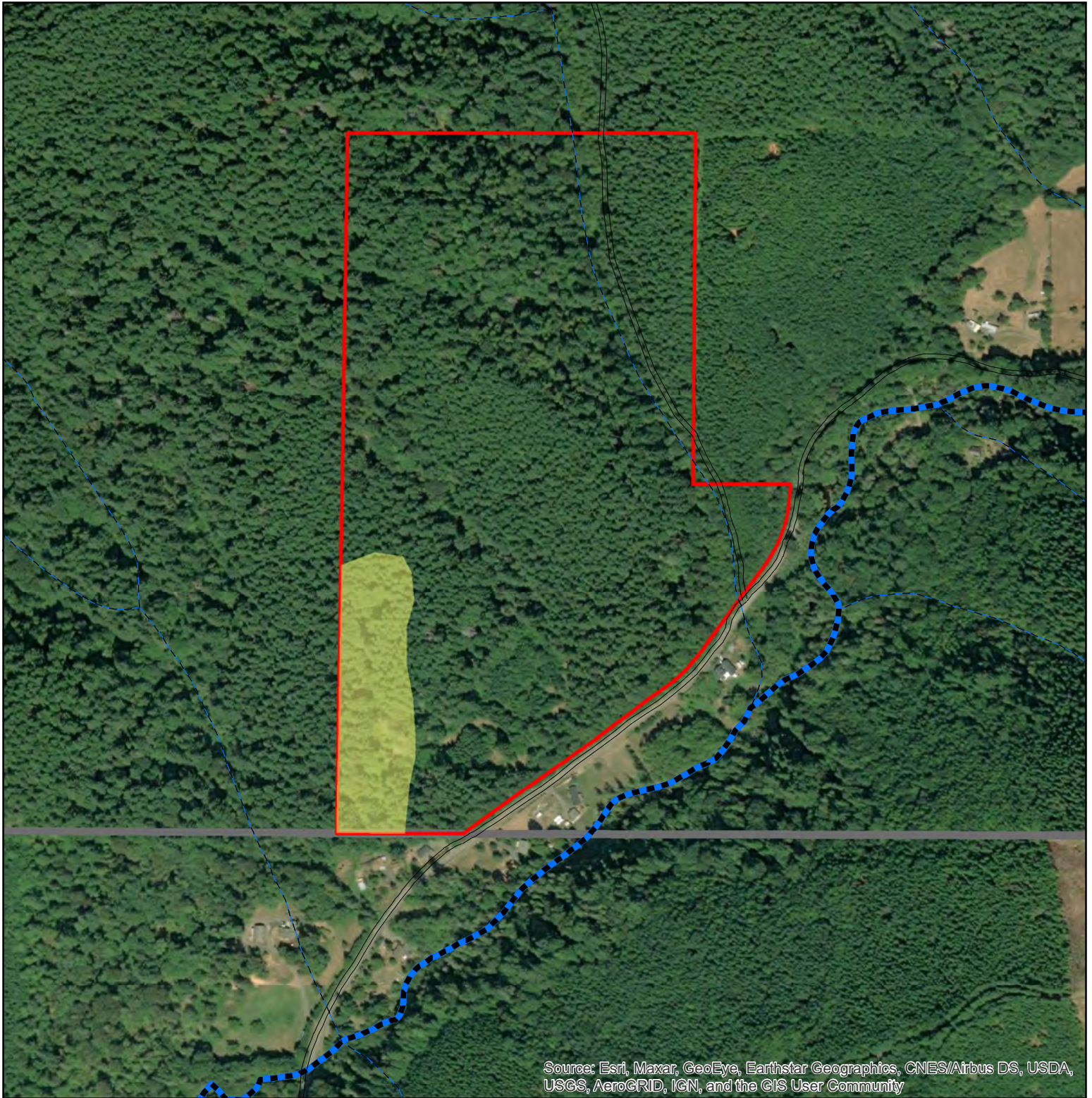


Sources: Esri, HERE, Garmin, USGS, Intermap, INCREMENT P, NRCan, Esri Japan, METI, Esri China (Hong Kong), Esri Korea, Esri (Thailand), NGCC, (c) OpenStreetMap contributors, and the GIS User Community



1 inch equals 6 miles



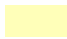



**NELSON MT. ROAD**  
**TL200, Section 31, T17S, R7W**  
**Lane County**  
**(74.82 Acres)**



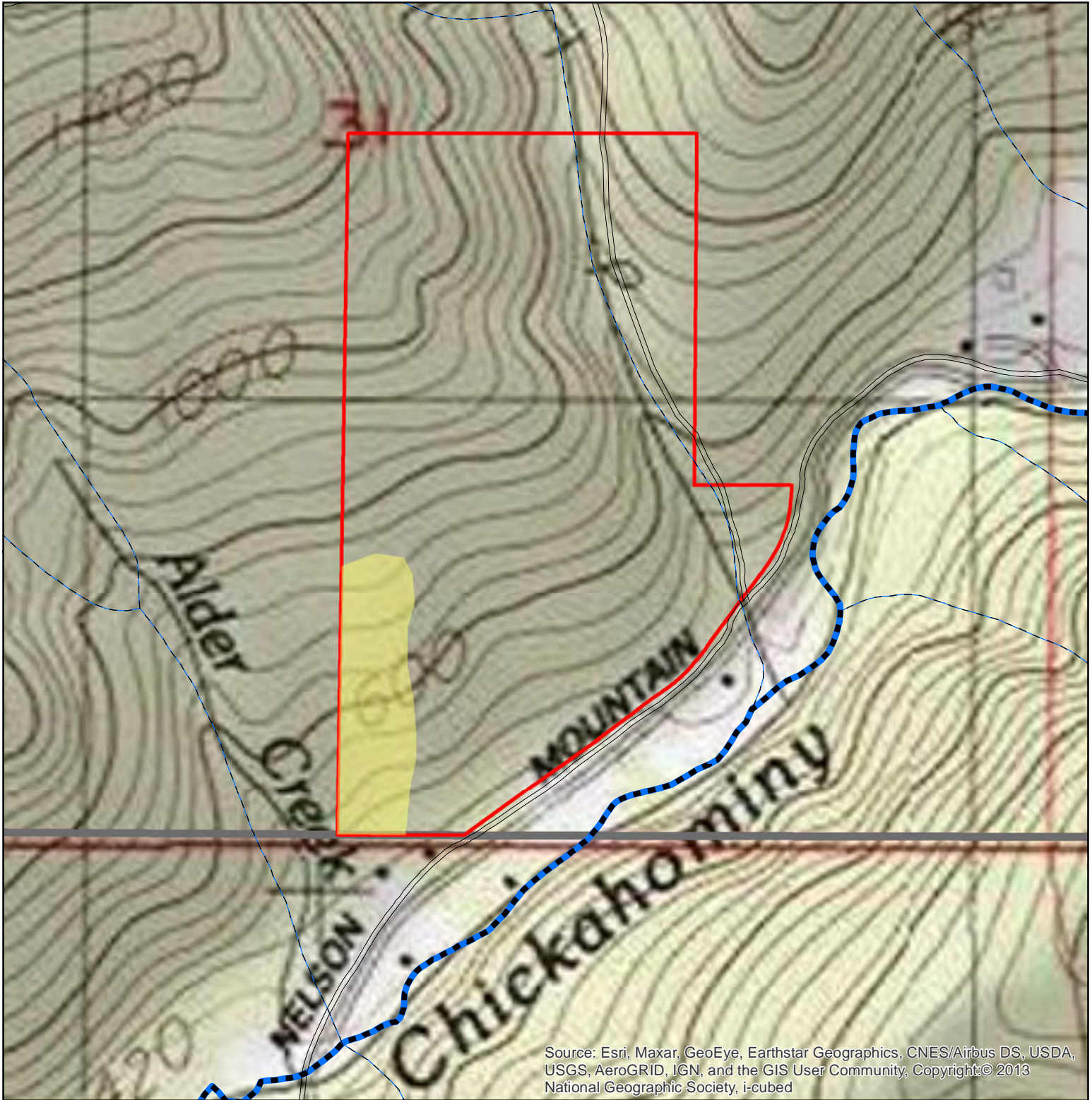
Source: Esri, Maxar, GeoEye, Earthstar Geographics, CNES/Airbus DS, USDA, USGS, AeroGRID, IGN, and the GIS User Community



1 inch = 500 feet

- |                      |   |   |
|----------------------|---|---|
| <b>Fish Presence</b> | <b>Stream Size</b>  |  <b>Garvin</b>               |
| --- Fish             |  Large   |  Approx HLHL restricted area |
| --- Unknown          |  Medium  |   |
|                      |  Small   |   |
|                      |  Unknown |   |

**NELSON MT. ROAD**  
**TL200, Section 31, T17S, R7W**  
**Lane County**  
**(74.82 Acres)**



Source: Esri, Maxar, GeoEye, Earthstar Geographics, CNES/Airbus DS, USDA, USGS, AeroGRID, IGN, and the GIS User Community, Copyright © 2013 National Geographic Society, i-cubed



1 inch = 500 feet

- |                      |                    |               |
|----------------------|--------------------|---------------|
| <b>Fish Presence</b> | <b>Stream Size</b> | <b>Garvin</b> |
| --- Fish             | — Large            | — Approx HLHL |
| --- Unknown          | — Medium           |               |
|                      | — Small            |               |
|                      | --- Unknown        |               |