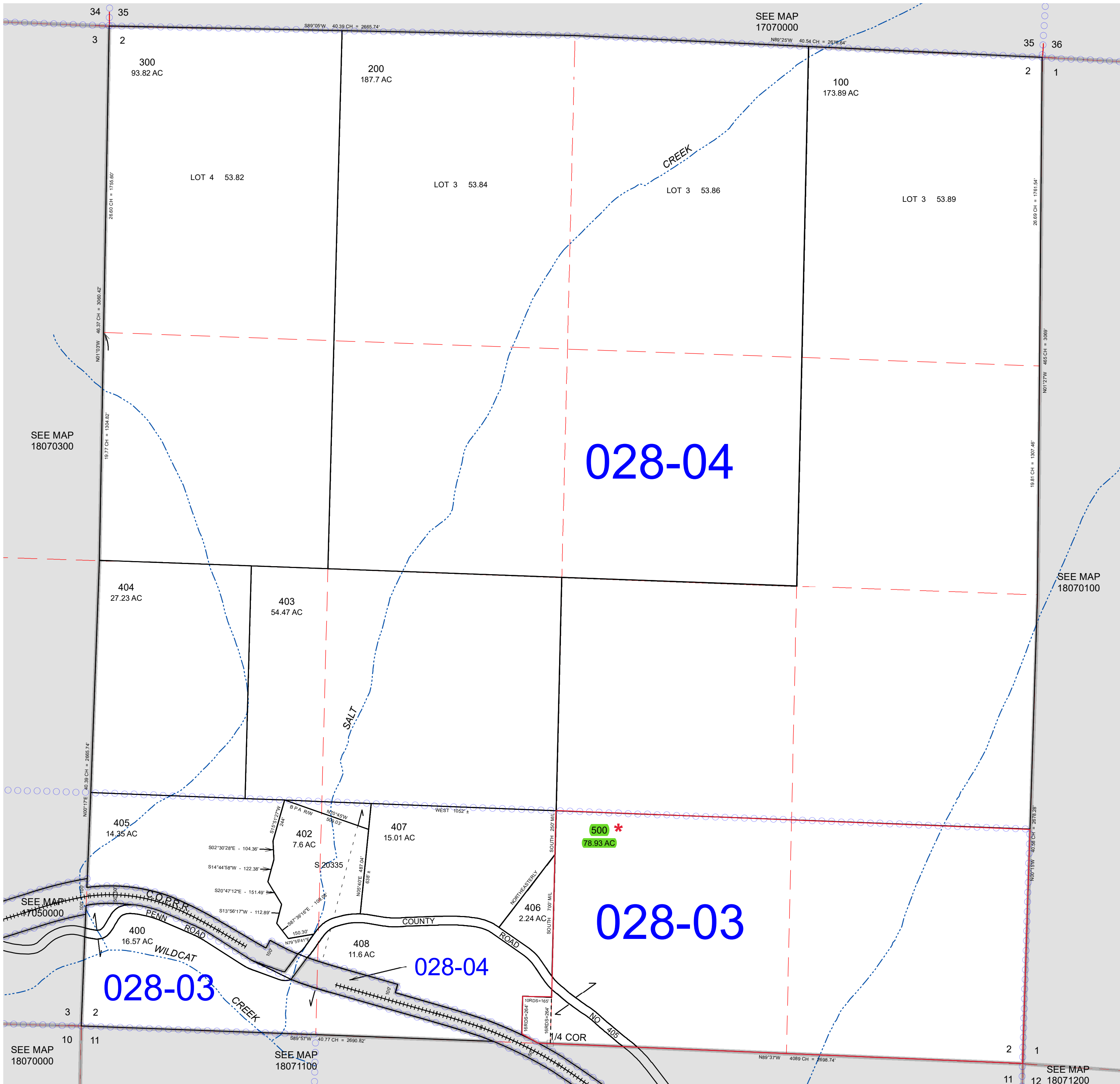


SECTION 2 T.18S. R.7W. W.M.  
Lane County  
1" = 400'



REVISIONS  
 08/27/2007 - LCAT140 - CONVERT MAP TO GIS  
 11/08/2007 - LCAT115 - UPDATE RAILWAY NAME  
 08/27/2021 - LCAT174 - CORRECT MAP TO MATCH DEEDS 408 & 500