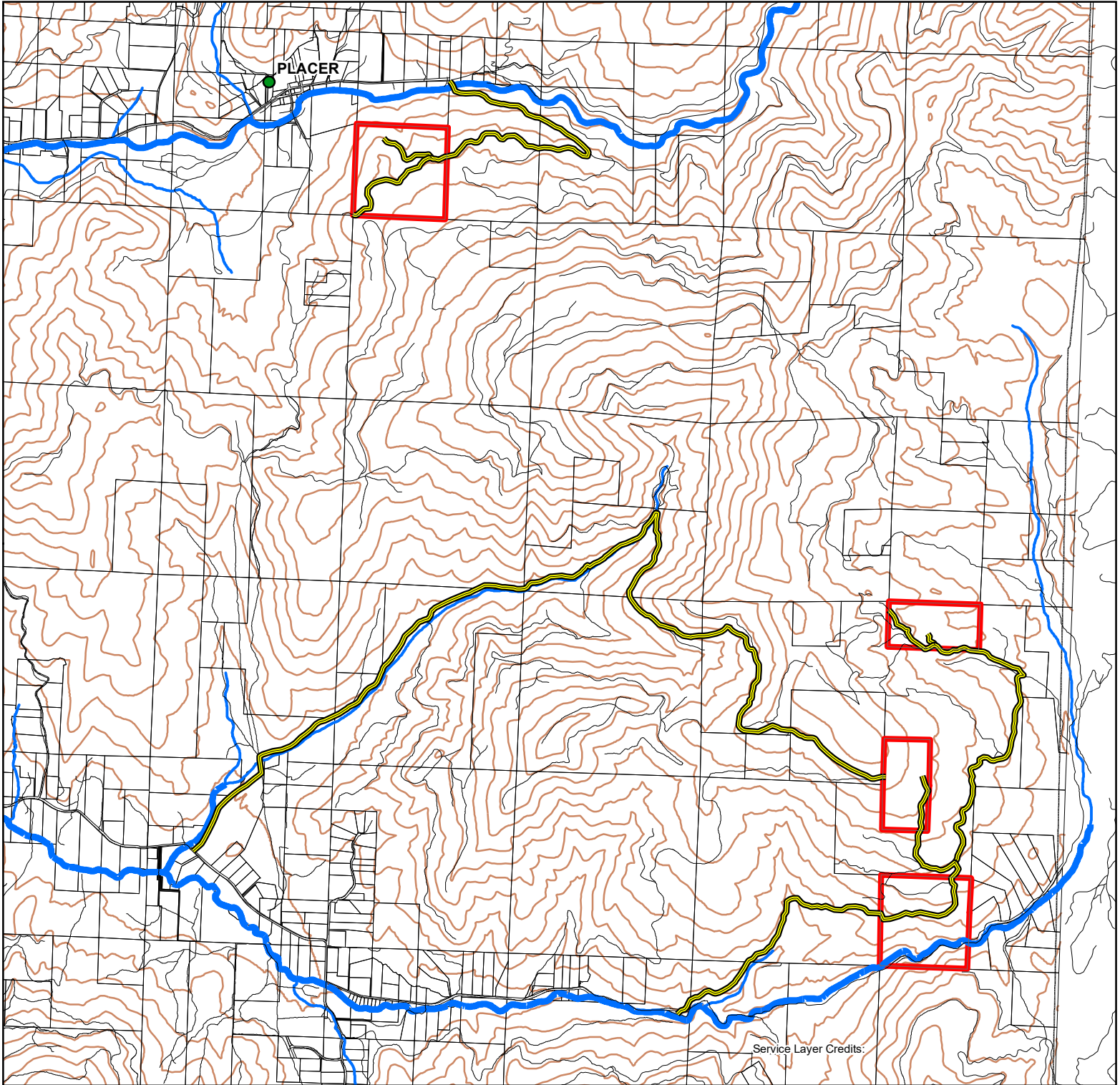


Joe Creek
Section 09, 25, 36 T34S R05W
Grants Pass
Josephine County, OR



1:48,000

1 in = 4,000 feet



subject property



JoeCreek_AccessRoutes



GTRN_PUB_ROADS_ARC

Hydrography_Statewide_Streams_Fp
fpasize



Large



Medium



JoCo_Taxlots

NW FOREST PROPERTIES
FOREST LAND SALES & ACQUISITIONS
www.NWForestProperties.com