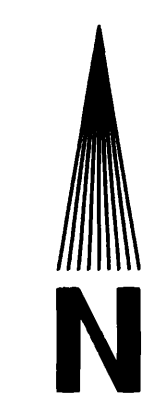


**RECORD OF SURVEY**  
 LOCATED IN  
 SW 1/4 SECTION 23, T15S, R1W, W.M.  
 LANE COUNTY, OREGON  
 FOR  
**WEYERHAEUSER COMPANY**  
 BY  
**ROBERTS SURVEYING INC.**  
 P.O. BOX 7155  
 EUGENE, OREGON 97401  
 PHONE (541) 345-1112



SCALE: 1" = 100'  
 MAY 23, 2008

REGISTERED  
 PROFESSIONAL  
 LAND SURVEYOR  
*Ted C. Baker*  
 OREGON  
 JULY 25, 1991  
 TED C. BAKER  
 2488  
 EXPIRES 12-31-09

**LEGEND**

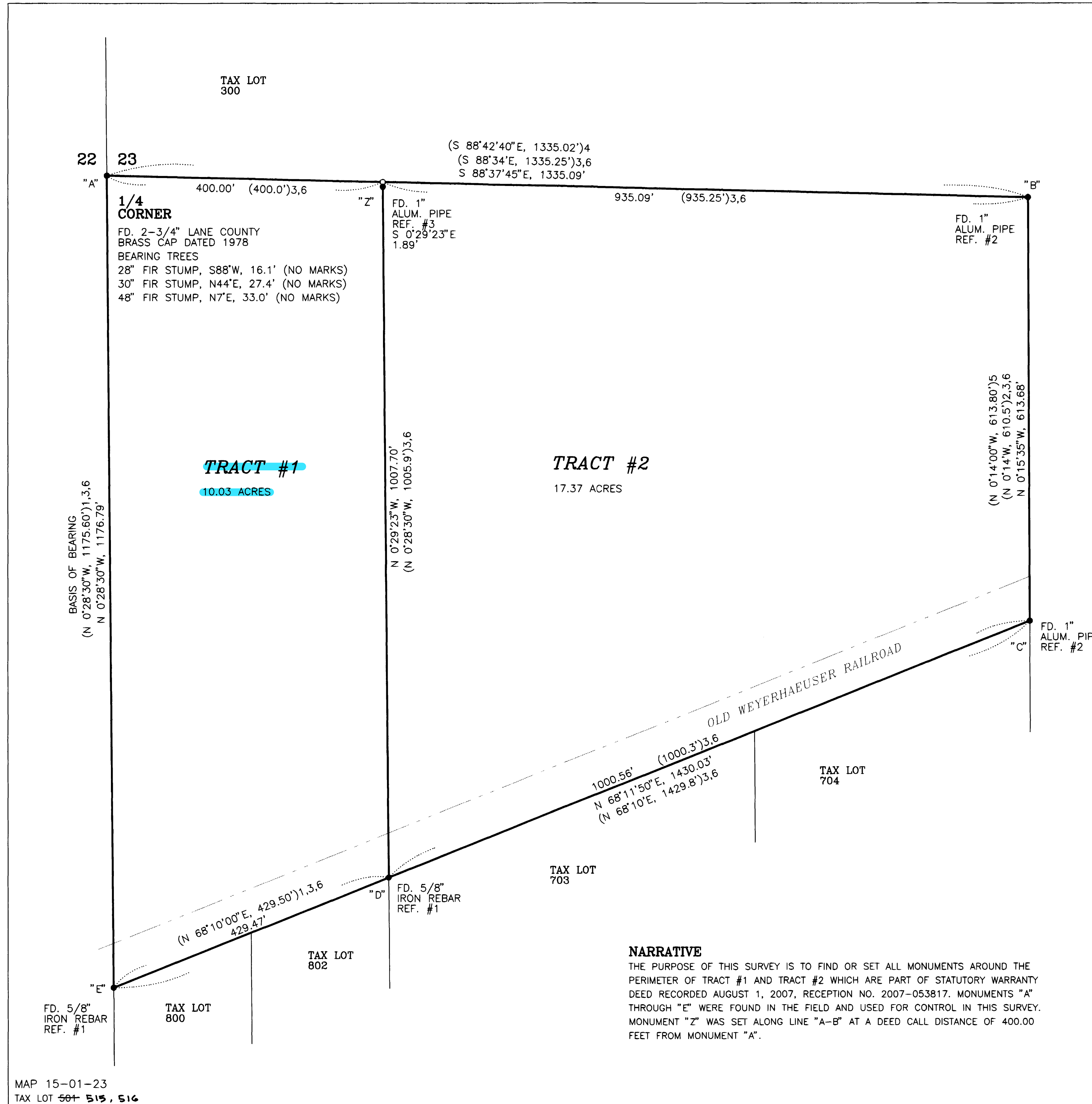
- MONUMENTS FOUND AS NOTED
- MONUMENTS SET: 5/8" X 30" IRON REBAR WITH YELLOW PLASTIC CAP STAMPED "ROBERTS SURV. INC."
- ( ) DATA OF RECORD

**REFERENCES**

- ( ) 1 C.S.F. 22825 BY GUILLE FILED APRIL 6, 1979.
- ( ) 2 C.S.F. 11221 BY JULIANO FILED OCTOBER, 1959.
- ( ) 3 C.S.F. 11338 BY JULIANO FILED FEBRUARY, 1960.
- ( ) 4 C.S.F. 32004 BY GUILLE FILED MAY 31, 1994.
- ( ) 5 C.S.F. 30738 BY SKINNER FILED AUGUST 26, 1992.
- ( ) 6 STATUTORY WARRANTY DEED, RECPT. NO. 2007-053817

**NARRATIVE**

THE PURPOSE OF THIS SURVEY IS TO FIND OR SET ALL MONUMENTS AROUND THE PERIMETER OF TRACT #1 AND TRACT #2 WHICH ARE PART OF STATUTORY WARRANTY DEED RECORDED AUGUST 1, 2007, RECEPTION NO. 2007-053817. MONUMENTS "A" THROUGH "E" WERE FOUND IN THE FIELD AND USED FOR CONTROL IN THIS SURVEY. MONUMENT "Z" WAS SET ALONG LINE "A-B" AT A DEED CALL DISTANCE OF 400.00 FEET FROM MONUMENT "A".



MAP 15-01-23  
 TAX LOT 504 515, 516