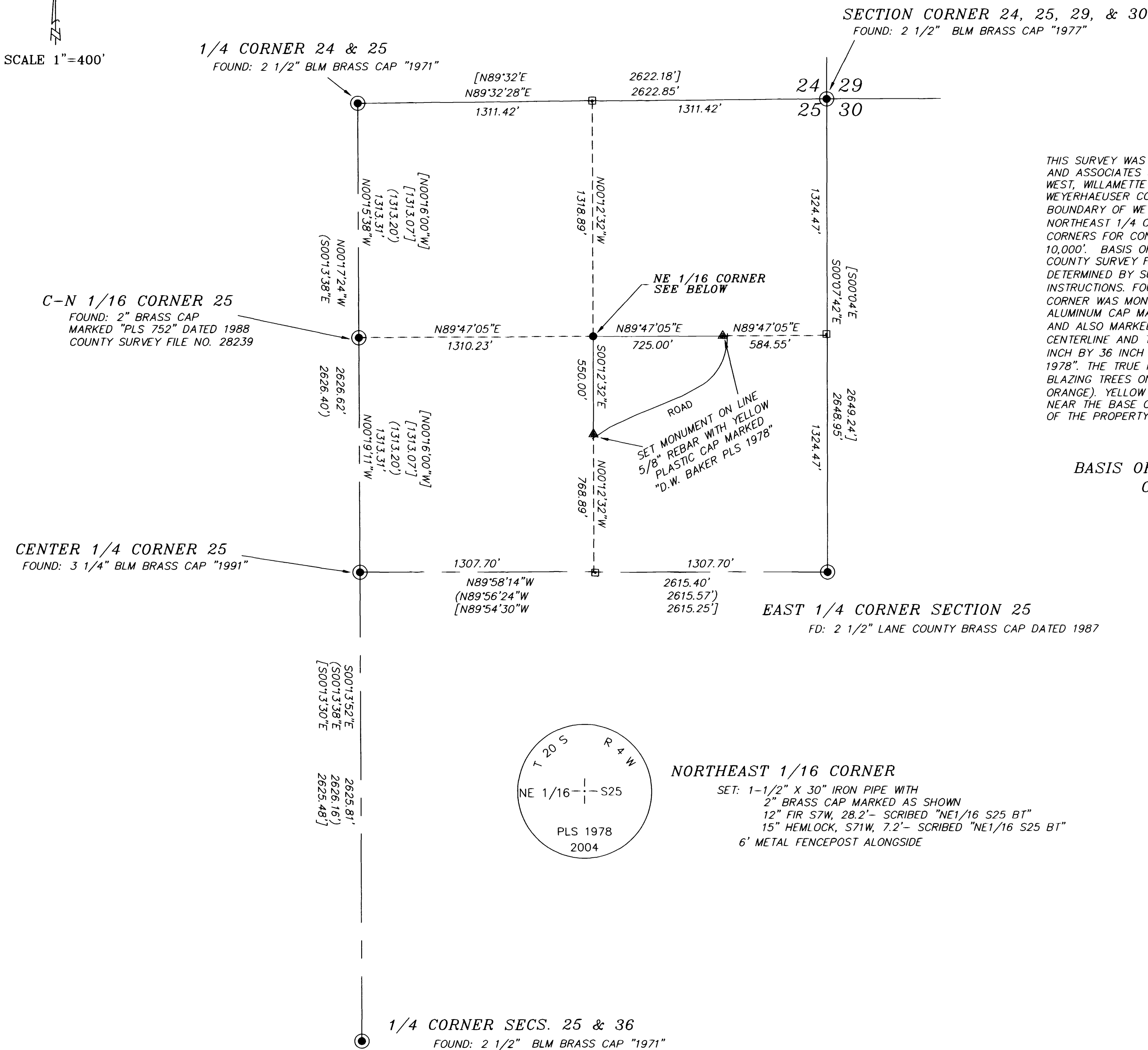


SCALE 1"=400'



**NARRATIVE**

THIS SURVEY WAS PERFORMED IN JANUARY, 2004 BY DANIEL W. BAKER OF BAKER AND ASSOCIATES SURVEYORS IN THE SECTION 25, TOWNSHIP 20 SOUTH, RANGE 4 WEST, WILLAMETTE MERIDIAN. THE SURVEY WAS DONE AT THE REQUEST OF THE WEYERHAEUSER COMPANY. THE PURPOSE OF THIS SURVEY WAS TO MARK THE BOUNDARY OF WEYERHAEUSER OWNERSHIP IN THE SOUTHEAST 1/4 OF THE NORTHEAST 1/4 OF SECTION 25. A CLOSED TRAVERSE WAS RUN BETWEEN FOUND CORNERS FOR CONTROL WITH A MINIMUM ERROR OF CLOSURE BETTER THAN 1' IN 10,000'. BASIS OF BEARING FOR THIS SURVEY WAS SOLAR OBSERVATION PER COUNTY SURVEY FILE NO. 27951, BY THIS COMPANY. THE BOUNDARY WAS DETERMINED BY SUBDIVIDING THE NE 1/4 OF THE SECTION PER BLM MANUAL OF INSTRUCTIONS. FOUND MONUMENT WERE HELD FOR CONTROL. THE NORTHEAST 1/16 CORNER WAS MONUMENTED WITH A 5/8 INCH BY 36 INCH REBAR WITH A 2 INCH ALUMINUM CAP MARKED WITH THE STANDARD MARKINGS PER THE 1973 BLM MANUAL AND ALSO MARKED "PLS 1978". THE 2 MONUMENTS SET ON THE NORTH-SOUTH CENTERLINE AND THE EAST-WEST CENTERLINE OF THE NORTHEAST 1/4 WERE 5/8 INCH BY 36 INCH REBARS WITH A YELLOW PLASTIC CAP MARKED "D.W. BAKER PLS 1978". THE TRUE PROPERTY LINE WAS MARKED WITH ORANGE RIBBON AND BY BLAZING TREES ON EITHER SIDE OF THE TRUE PROPERTY LINE (BLAZES PAINTED ORANGE). YELLOW PLASTIC WEYERHAEUSER TAGS WERE PLACED ON RANDOM TREES, NEAR THE BASE OF THE TREE, ALONG THE TRUE LINE, ON THE WEYERHAEUSER SIDE OF THE PROPERTY LINE.

BASIS OF BEARING: SOLAR OBSERVATION PER COUNTY SURVEY FILE NO. 27951

**LEGEND**

- - FOUND MONUMENT AS NOTED
- - SET MONUMENT (1 1/2" X 30" IRON PIPE WITH 2" BRASS CAP MARKED AS NOTED)
- ▲ - LINE MONUMENTS (5/8" X 30" REBAR MARKED "D.W. BAKER PLS 1978")
- - CALCULATED POINT (NOT SET)
- - BLAZED AND PAINTED PROPERTY LINES
- ( ) - RECORD C.S. 28239
- [ ] - RECORD B.L.M.

REGISTERED PROFESSIONAL LAND SURVEYOR

*Daniel W. Baker*  
 OREGON  
 JULY 16, 1982  
 DANIEL W. BAKER  
 1978

EXPIRES 12/31/05

I CERTIFY THAT THIS MAP WAS PREPARED USING A HP51640A INK CARTRIDGE ON CONTINENTAL JPC4M2 POLYESTER FILM

MAP: 20-04-25 TAX LOT: 300

SURVEY IN  
 NE 1/4 SECTION 25, T20S, R4W, W.M.  
 LANE COUNTY, OREGON

CLIENT: WEYERHAEUSER COMPANY	
DRAWN BY: KRC	BAKER AND ASSOCIATES, SURVEYORS
DATE: 1-27-04	1385 OAK STREET - SUITE 3
FILE: PL200425	EUGENE, OREGON (541) 343-7243