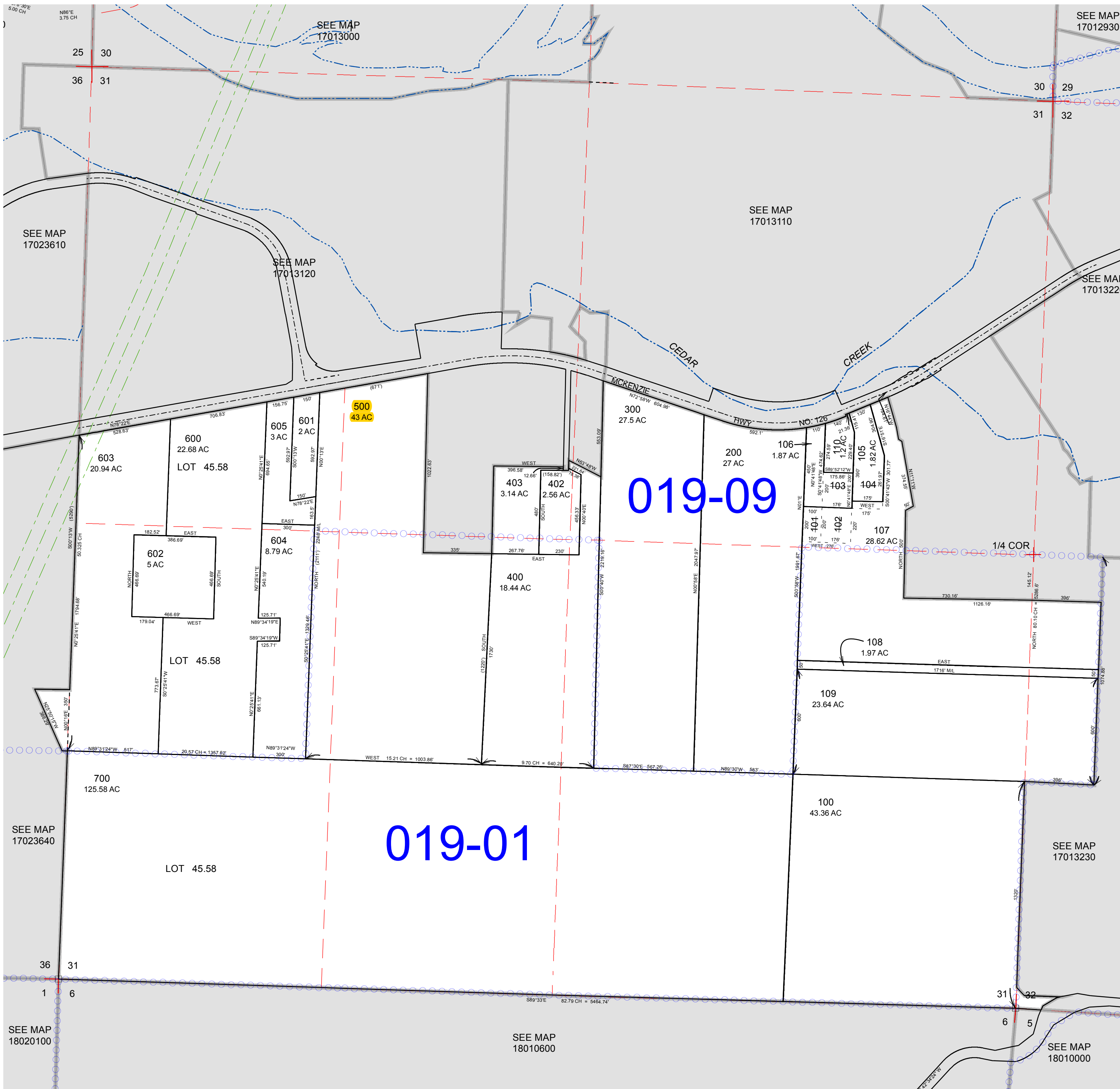


SECTION 31 T.17S. R.1W. W.M.  
Lane County  
1" = 400'

- CANCELLED
- 101
- 102
- 103
- 104
- 401



REVISIONS  
 04/21/2008 - LCAT167 - CONVERT MAP TO GIS  
 12/28/2011 - LCAT155 - CONSOLIDATE 1702364000101 INTO TL 603