

CANCELLED
1400
200
300

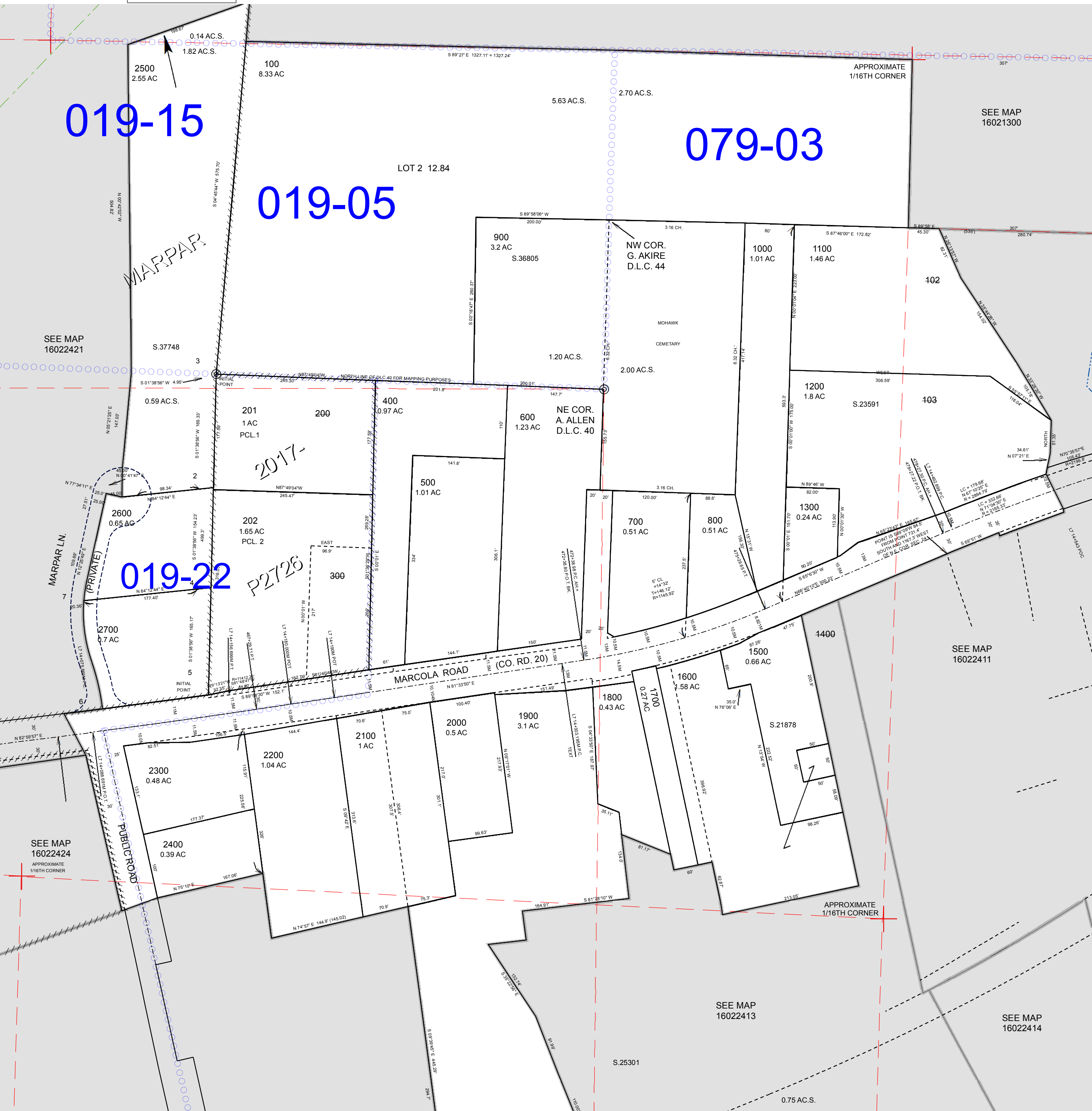
FOR ASSESSMENT AND
TAXATION ONLY

019-15

079-03

019-05

019-22



REVISIONS
11/27/2007 - LCAT155 - CONVERT MAP TO GIS
05/08/2017 - LCAT174 - CANCEL TL 200 & TL 300 INTO 2017-P2726