

COUNTY: LINCOLN
 OWNER: STIMSON
 TWN 11S
 RNG 10W
 SECTION 10

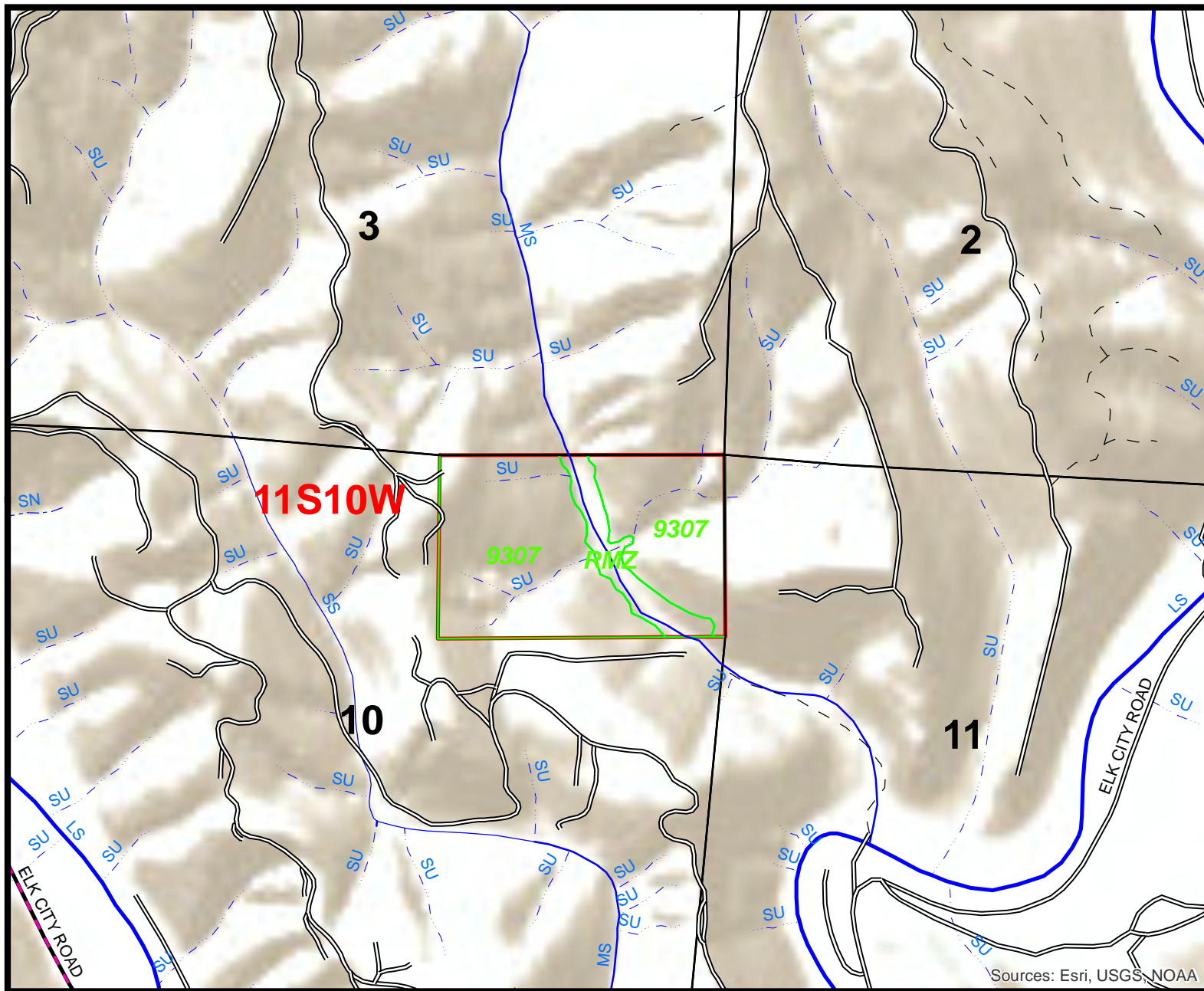
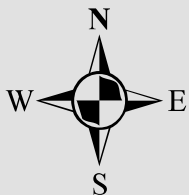
STIMSON LUMBER COMPANY CARLISLE TRACT

STIMSON LUMBER

Stream_Central

SLCSTRC

- LS2
- LF2
- LS
- LF
- MS
- MF
- SS
- SF
- UF
- LD
- MD
- SD
- UD
- LN
- MN
- SN
- UN
- LU
- MU
- SU
- UU
- NC
- PRIMARY-HWY
- SECONDARY-HWY
- LIGHT-DUTY
- UNIMPROVED
- ROW
- TRAIL-4WD
- ABANDONED
- RAILROADS
- POWERLINES
- PIPELINES
- AQUEDUCT
- Section_Central
- Township_Central
- SLC



Sources: Esri, USGS, NOAA

1:12,000

COUNTY: LINCOLN
OWNER: STIMSON
TWN 8S
RNG 11W
SECTION 1

STIMSON LUMBER COMPANY

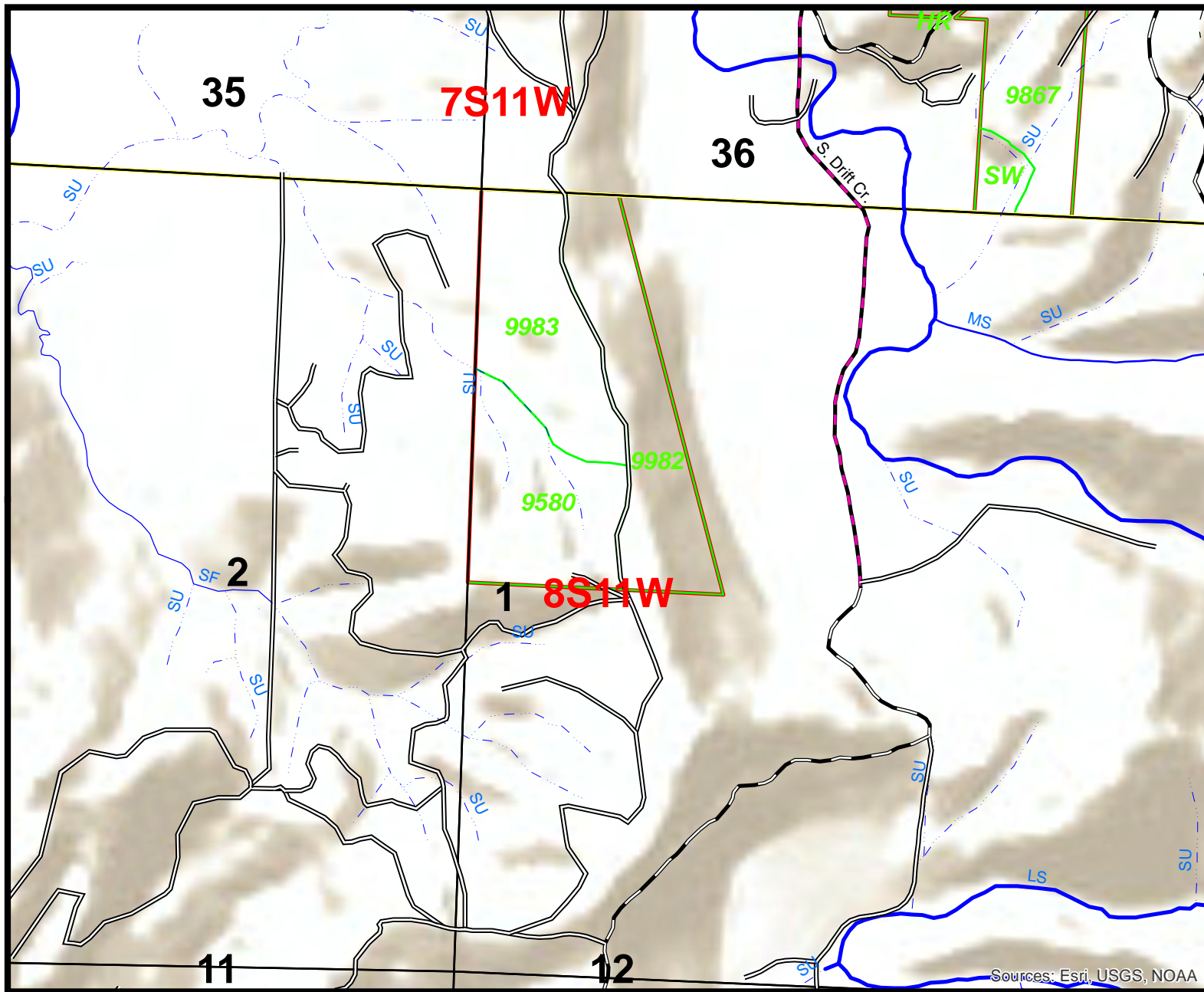
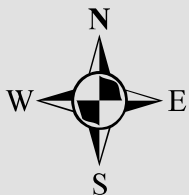
DRIFT CREEK

STIMSON LUMBER

Stream_Central

SLCSTRC

- LS2
- LF2
- LS
- LF
- MS
- MF
- SS
- SF
- UF
- LD
- MD
- SD
- UD
- LN
- MN
- SN
- UN
- LU
- MU
- SU
- UU
- NC
- PRIMARY-HWY
- SECONDARY-HWY
- LIGHT-DUTY
- UNIMPROVED
- ROW
- TRAIL-4WD
- ABANDONED
- RAILROADS
- POWERLINES
- PIPELINES
- AQUEDUCT
- Section_Central
- Township_Central
- SLC



1:12,000

COUNTY: LINCOLN
 OWNER: STIMSON
 TWN 7S
 RNG 11W
 SECTION 25, 36

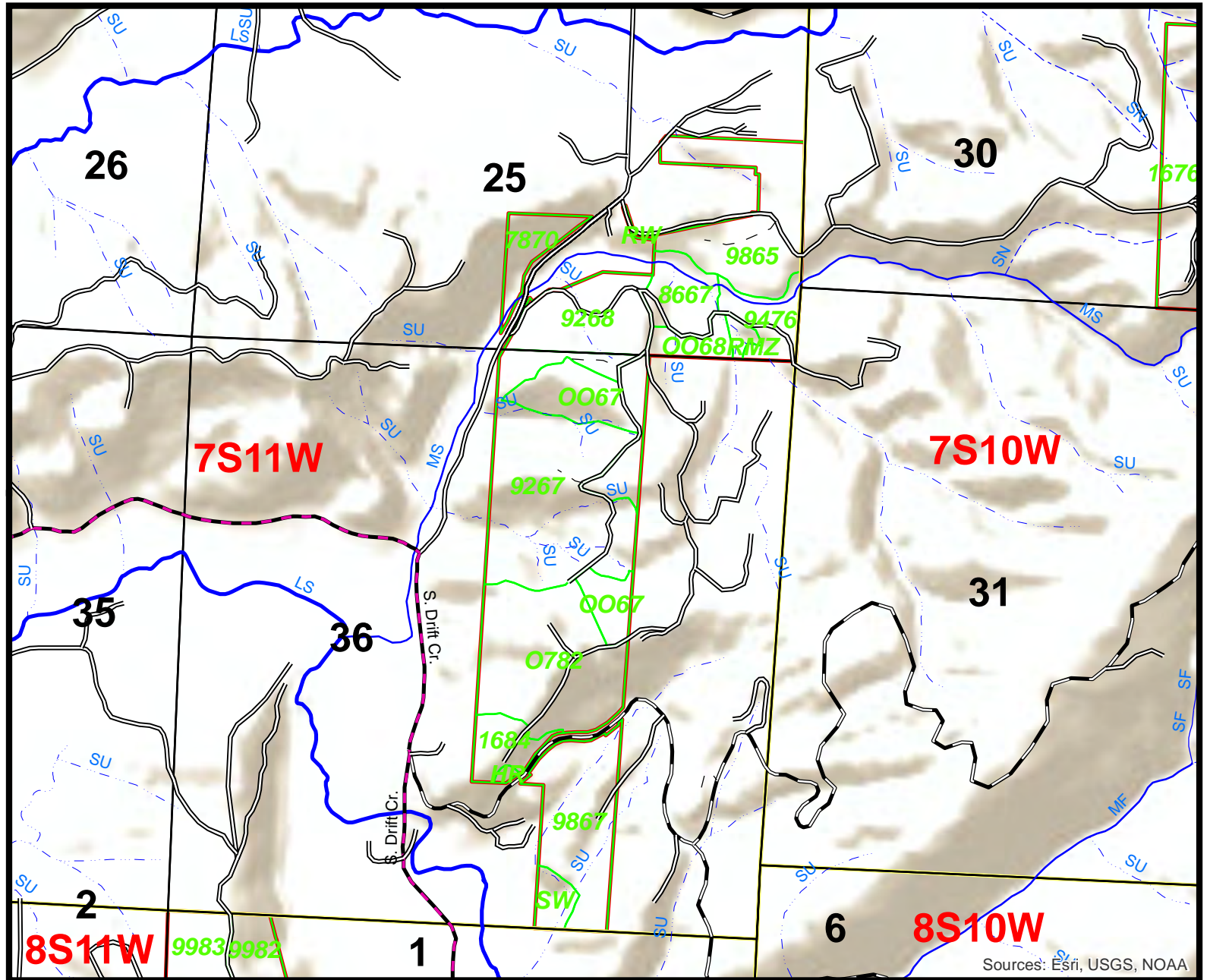
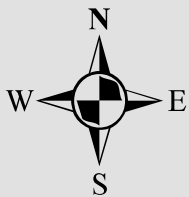
STIMSON LUMBER COMPANY PAINT CAN

STIMSON LUMBER

Stream_Central

SLCSTRC

- LS2
- LF2
- LS
- LF
- MS
- MF
- SS
- SF
- UF
- LD
- MD
- SD
- UD
- LN
- MN
- SN
- UN
- LU
- MU
- SU
- UU
- NC
- PRIMARY-HWY
- SECONDARY-HWY
- LIGHT-DUTY
- UNIMPROVED
- ROW
- TRAIL-4WD
- ABANDONED
- RAILROADS
- POWERLINES
- PIPELINES
- AQUEDUCT
- Section_Central
- Township_Central
- SLC



1:16,000

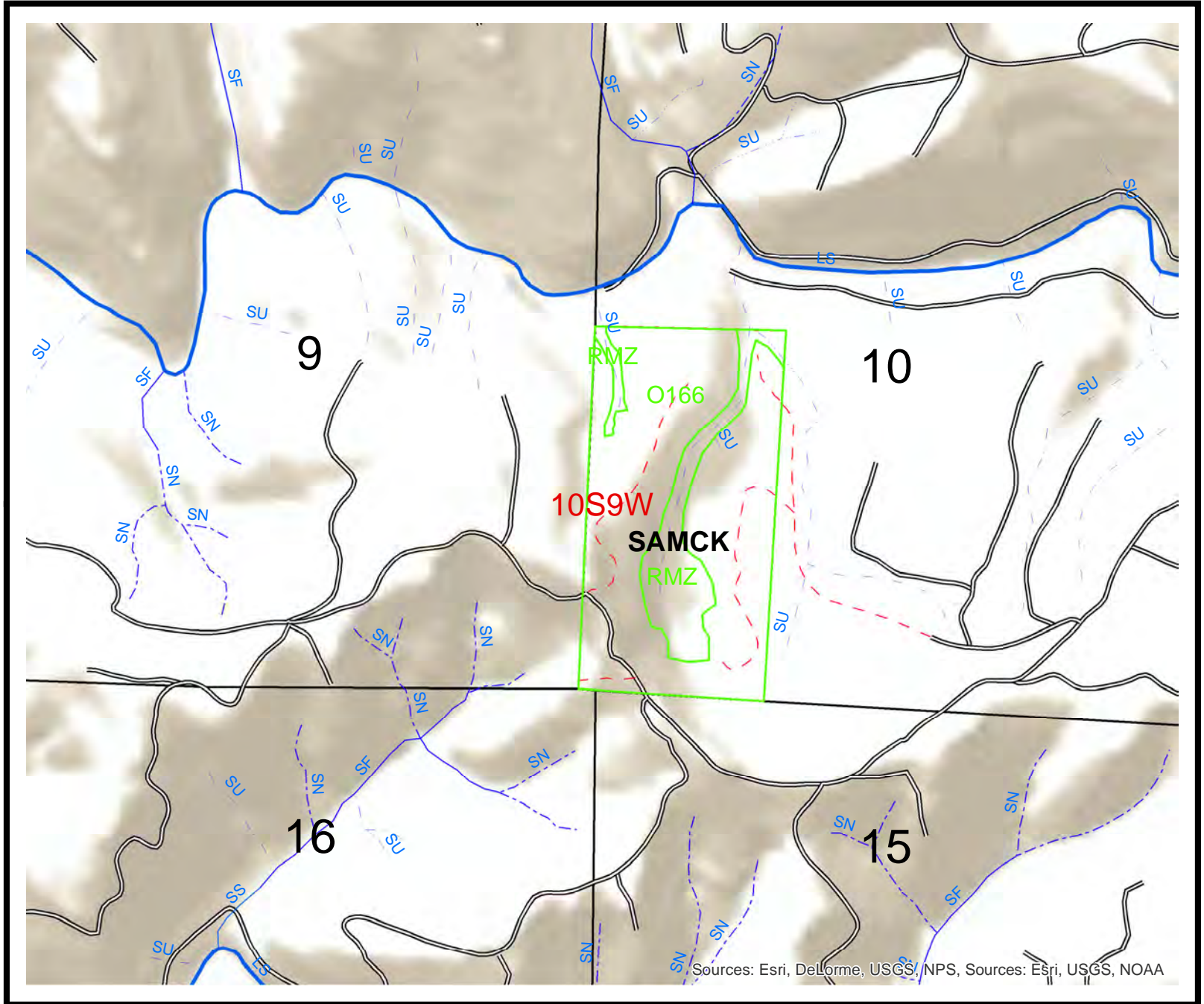
STIMSON LUMBER COMPANY

SAMCR TRACT

COUNTY: LINCOLN
 OWNER: STIMSON
 TRACT: SAMCK
 TOWNSHIP: 10S
 RANGE: 9W
 SEC: 10

STIMSON LUMBER

- Gates_2019
- Type_Coast
- HARV19
- Stream_Coast**
- SLCSTRC**
- SS
- LS2
- MS
- LS
- LF2
- LF
- MF
- SF
- UF
- LD
- MD
- SD
- UD
- LN
- MN
- SN
- UN
- LU
- MU
- SU
- UU
- NC
- PRIMARY-HWY
- SECONDARY-HWY
- LIGHT-DUTY
- UNIMPROVED
- ROW
- TRAIL-4WD
- ABANDONED
- RAILROADS
- POWERLINES
- PIPELINES
- AQUEDUCT
- Township_Coast
- Section_Coast
- STIMSON PROPERTY



Sources: Esri, DeLorme, USGS, NPS, Sources: Esri, USGS, NOAA

1:12,000

STIMSON LUMBER COMPANY

SCHOONER

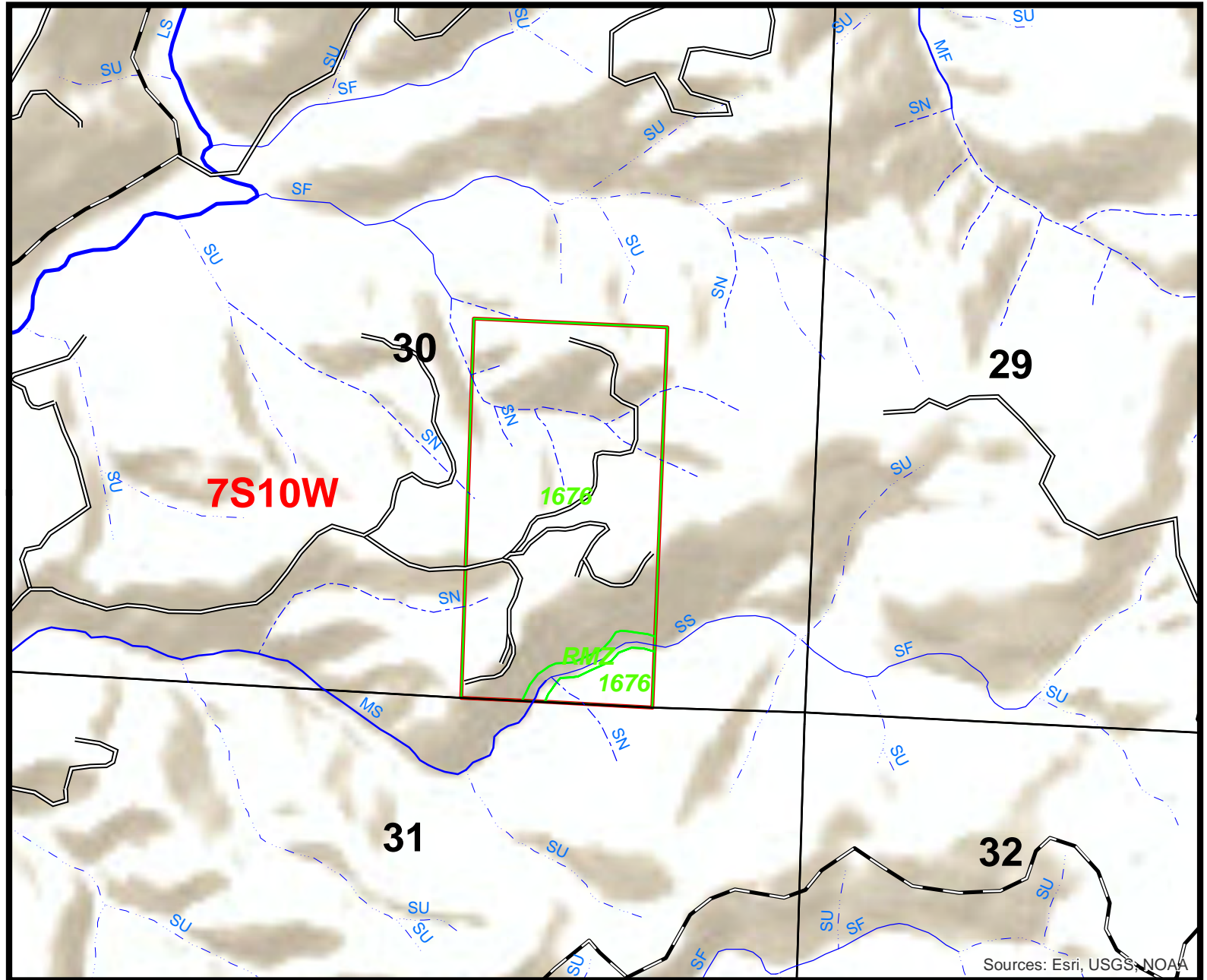
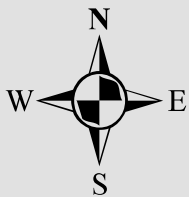
COUNTY: LINCOLN
 OWNER: STIMSON
 TWN 7S
 RNG 10W
 SECTION 30

STIMSON LUMBER

Stream_Central

SLCSTRC

- LS2
- LF2
- LS
- LF
- MS
- MF
- SS
- SF
- UF
- LD
- MD
- SD
- UD
- LN
- MN
- SN
- UN
- LU
- MU
- SU
- UU
- NC
- PRIMARY-HWY
- SECONDARY-HWY
- LIGHT-DUTY
- UNIMPROVED
- ROW
- TRAIL-4WD
- ABANDONED
- + RAILROADS
- POWERLINES
- PIPELINES
- AQUEDUCT
- Section_Central
- Township_Central
- SLC



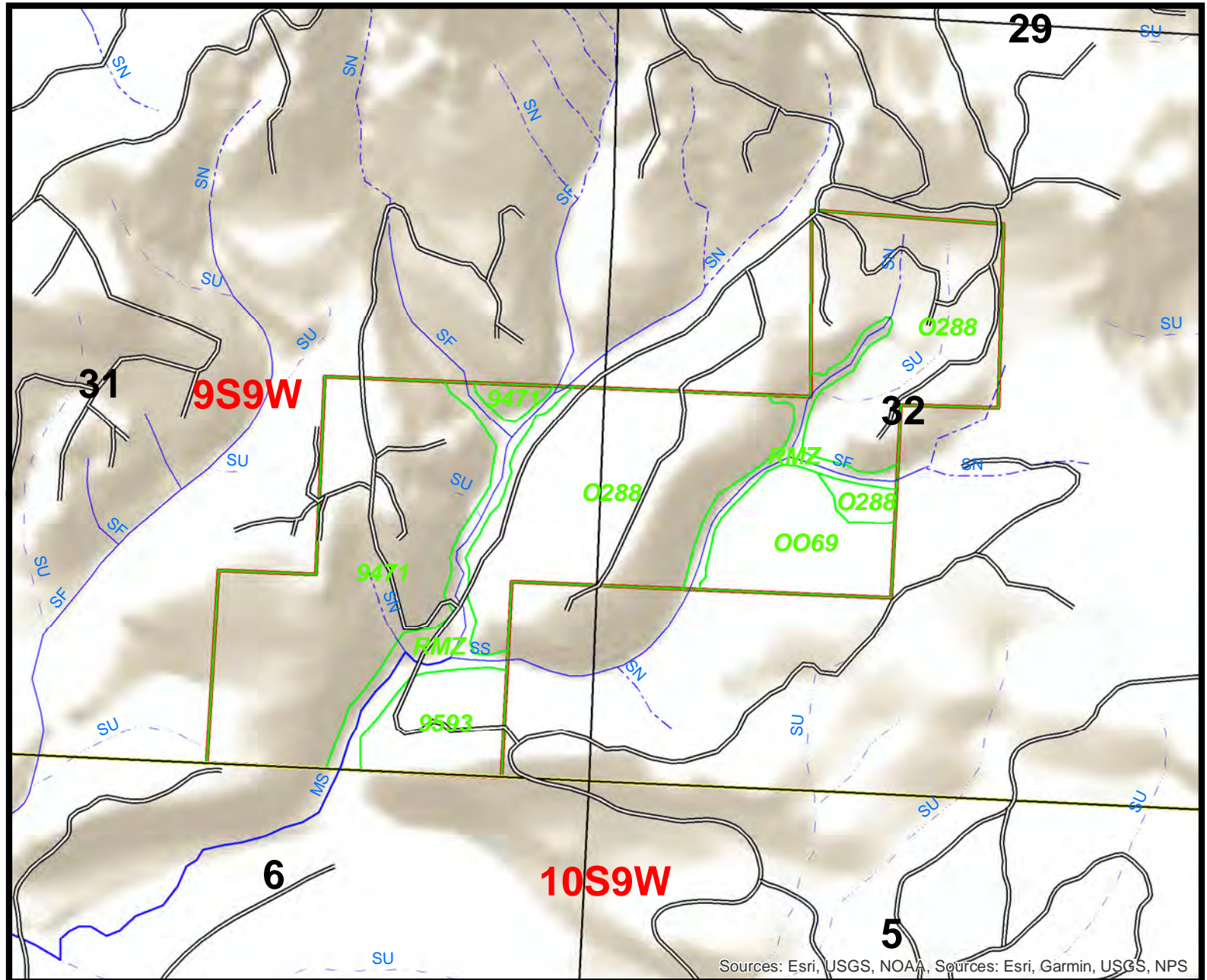
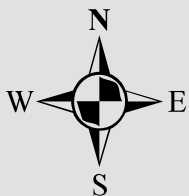
1:12,000

COUNTY: LINCOLN
 OWNER: STIMSON
 TWN 9S
 RNG 9W
 SECTION 31, 32

STIMSON LUMBER COMPANY

SILETZE TRACT

- STIMSON LUMBER
 Stream_Central
 SLCSTRC
- LS2
 - LF2
 - LS
 - LF
 - MS
 - MF
 - SS
 - SF
 - UF
 - LD
 - MD
 - SD
 - UD
 - LN
 - MN
 - SN
 - UN
 - LU
 - MU
 - SU
 - UU
 - NC
 - PRIMARY-HWY
 - SECONDARY-HWY
 - LIGHT-DUTY
 - UNIMPROVED
 - ROW
 - TRAIL-4WD
 - ABANDONED
 - RAILROADS
 - POWERLINES
 - PIPELINES
 - AQUEDUCT
 - Section_Central
 - Township_Central
 - SLC



Sources: Esri, USGS, NOAA, Sources: Esri, Garmin, USGS, NPS

1:12,000

COUNTY: LINCOLN
 OWNER: STIMSON
 TWN 10S
 RNG 10W
 SECTION 1, 2

STIMSON LUMBER COMPANY

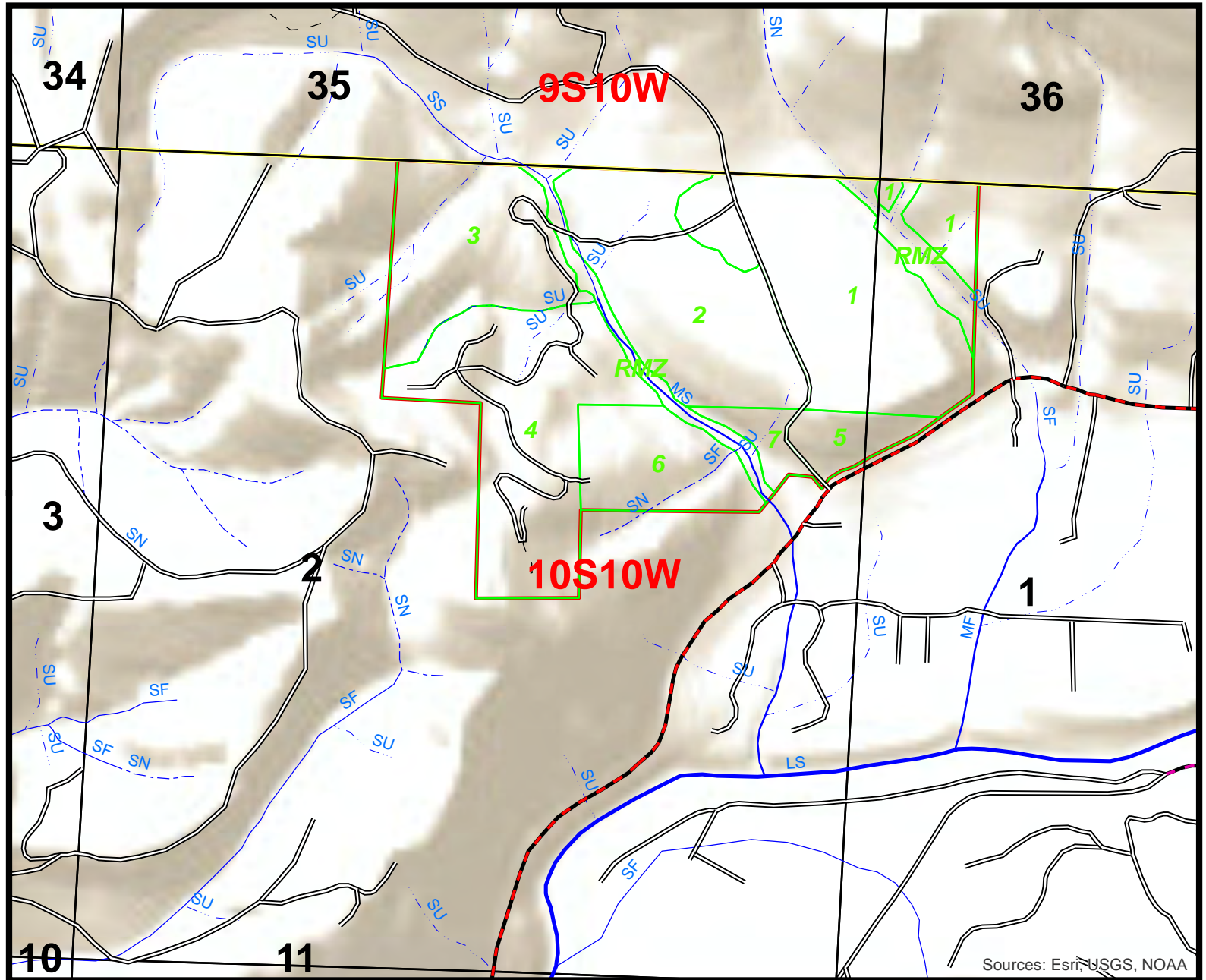
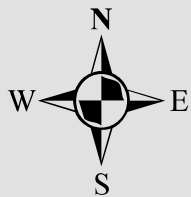
SILETZ TRACT

STIMSON LUMBER

Stream_Central

SLCSTRC

- LS2
- LF2
- LS
- LF
- MS
- MF
- SS
- SF
- UF
- LD
- MD
- SD
- UD
- LN
- MN
- SN
- UN
- LU
- MU
- SU
- UU
- NC
- PRIMARY-HWY
- SECONDARY-HWY
- LIGHT-DUTY
- UNIMPROVED
- ROW
- TRAIL-4WD
- ABANDONED
- RAILROADS
- POWERLINES
- PIPELINES
- AQUEDUCT
- Section_Central
- Township_Central
- SLC



Sources: Esri, USGS, NOAA

1:12,000