

THIS MAP WAS PREPARED FOR ASSESSMENT PURPOSE ONLY.

NW1/4 SEC.23 T.27S. R.3W. W.M.
DOUGLAS COUNTY
1" = 200'

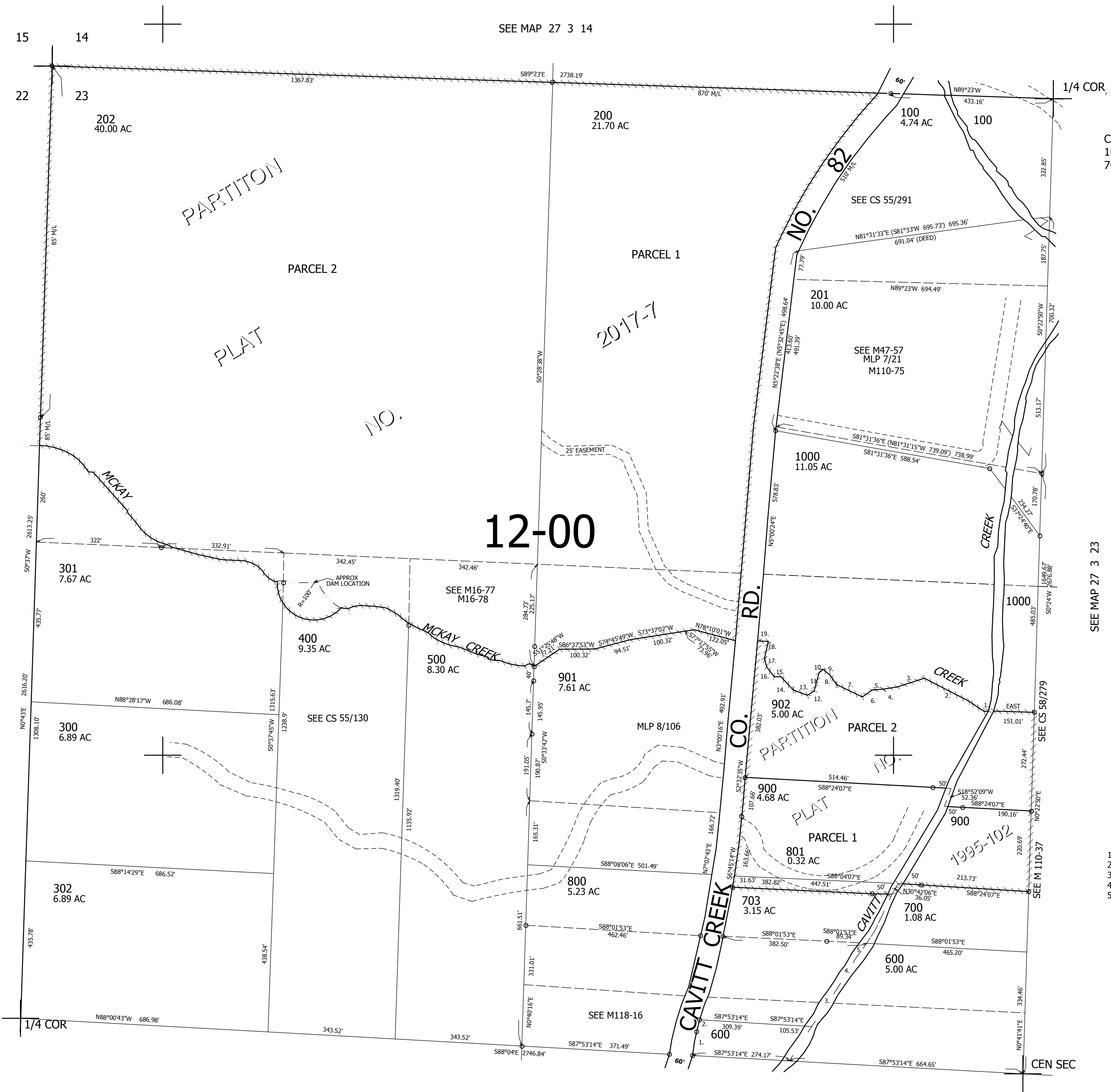
REVISED ON
4-6-17

27 3 23B

SEE MAP 27 3 14

SEE MAP 27 3 00

CANCELLED NO'S
1001 601 701
702 802



- SEE MAP 27 3 23
- PARCEL 1000 & 902
1. N57°48'45"W 58.84'
 2. N63°44'27"W 123.23'
 3. S73°42'04"W 91.93'
 4. S80°05'56"W 37.96'
 5. S86°10'55"W 21.08'
 6. S55°56'08"W 32.51'
 7. N63°47'42"W 78.89'
 8. N37°24'35"W 28.97'
 9. N47°31'52"W 22.58'
 10. S45°33'26"W 19.73'
 11. S14°42'15"W 49.11'
 12. S55°18'18"W 18.96'
 13. N70°53'05"W 44.15'
 14. N40°14'01"W 45.51'
 15. S86°40'48"W 21.95'
 16. N36°11'43"W 33.92'
 17. N17°57'33"W 24.21'
 18. N9°37'06"E 47.53'
 19. N87°42'32"W 27.55'

- PARCEL 703
1. N15°16'07"E 69.41'
 2. N16°05'53"E 35.39'
 3. N32°24'54"E 125.41'
 4. N29°39'48"E 101.08'
 5. N35°E 39.73'

572,000

SEE MAP 27 3 23

4,249,000

27 3 23B