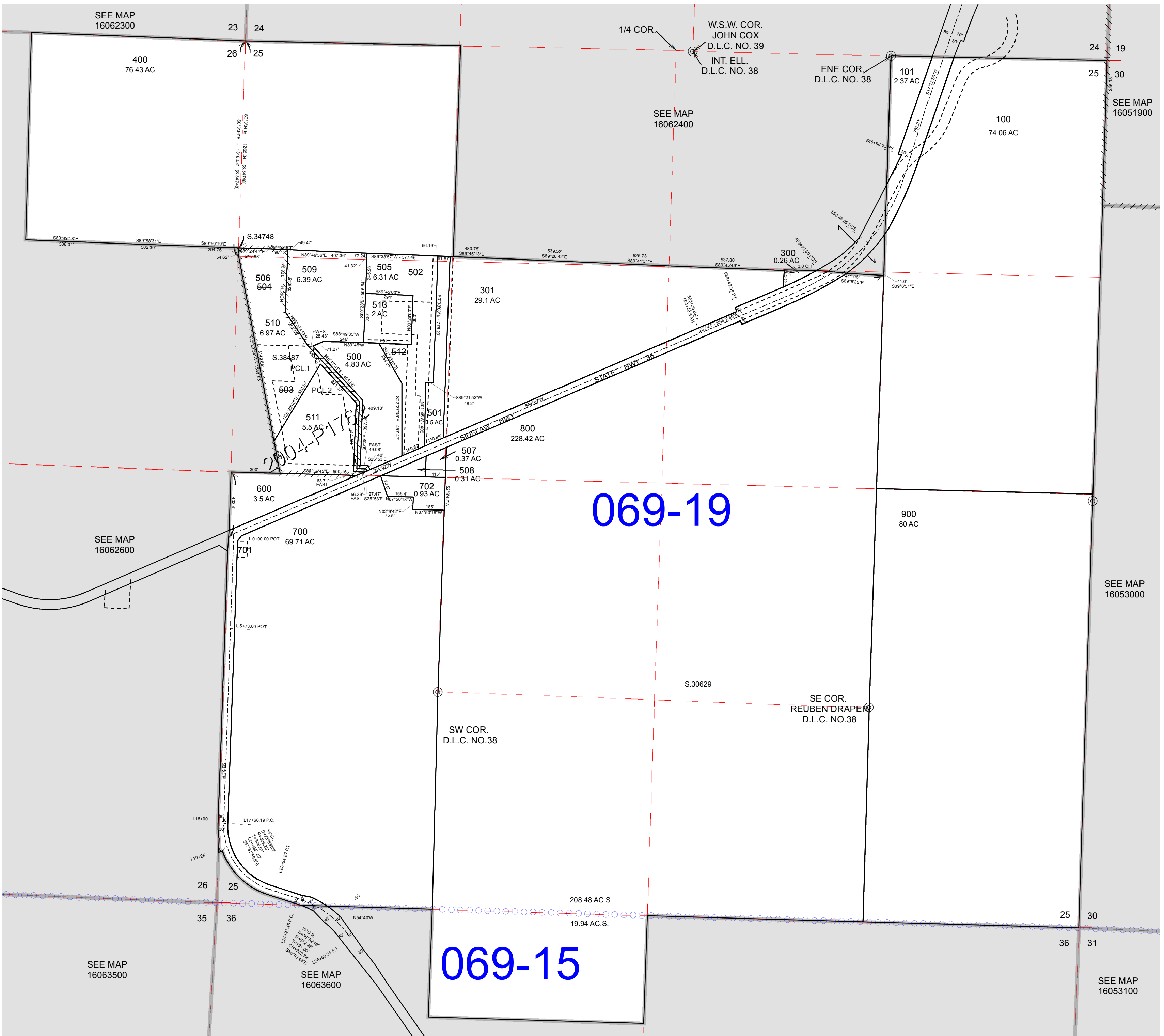


SECTION 25 T.16S. R.6W. W.M.
Lane County
1" = 400'

REVISIONS
01/29/2007 - LCAT155 - CONVERT MAP TO GIS
05/01/2007 - LCAT142 - L.L.A. BETWEEN T1S 301, 501
04/26/2007 - LCAT142 - DIV TL. 513 O.O. 505
04/26/2007 - LCAT142 - L.L.A. BETWEEN TL. 505 & 513
07/13/2018 - LCAT174 - NEW TAX LOT 101

LCATJCG - 2018-07-13 09:52

CANCELLED
502
503
504
506
512
701
200



069-19

069-15

SEE MAP
16062300

SEE MAP
16062400

SEE MAP
16051900

SEE MAP
16062600

SEE MAP
16053000

SEE MAP
16063500

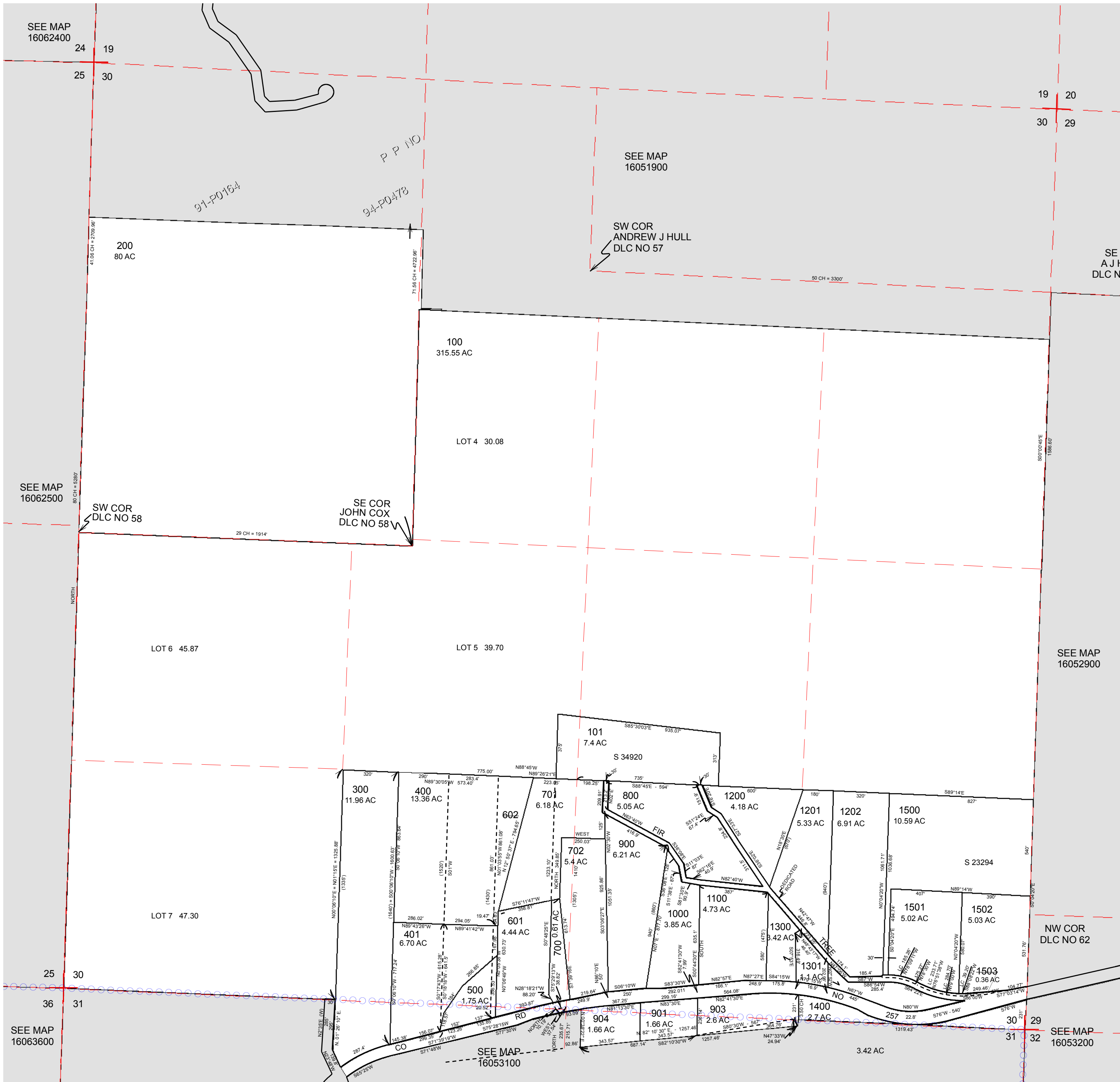
SEE MAP
16063600

SEE MAP
16053100

SECTION 30 T.16S. R.5W. W.M.
Lane County
1" = 400'

GIS DATA
4/4/2007 10:48:34 AM : lcatjxg

CANCELLED:
902
600
602



REVISIONS:
 4/28/2006 - LCAT113 - CONVERT MAP TO GIS
 5/31/2006 - LCAT130 - SEG 401 O.D. 400
 5/31/2006 - LCAT130 - LLA 401 & 400
 4/4/2007 - LCAT155 - LLA 500 & 602, CANG 602 INTO 701
 4/4/2007 - LCAT155 - LLA 500 & 401, LLA 400 & 701