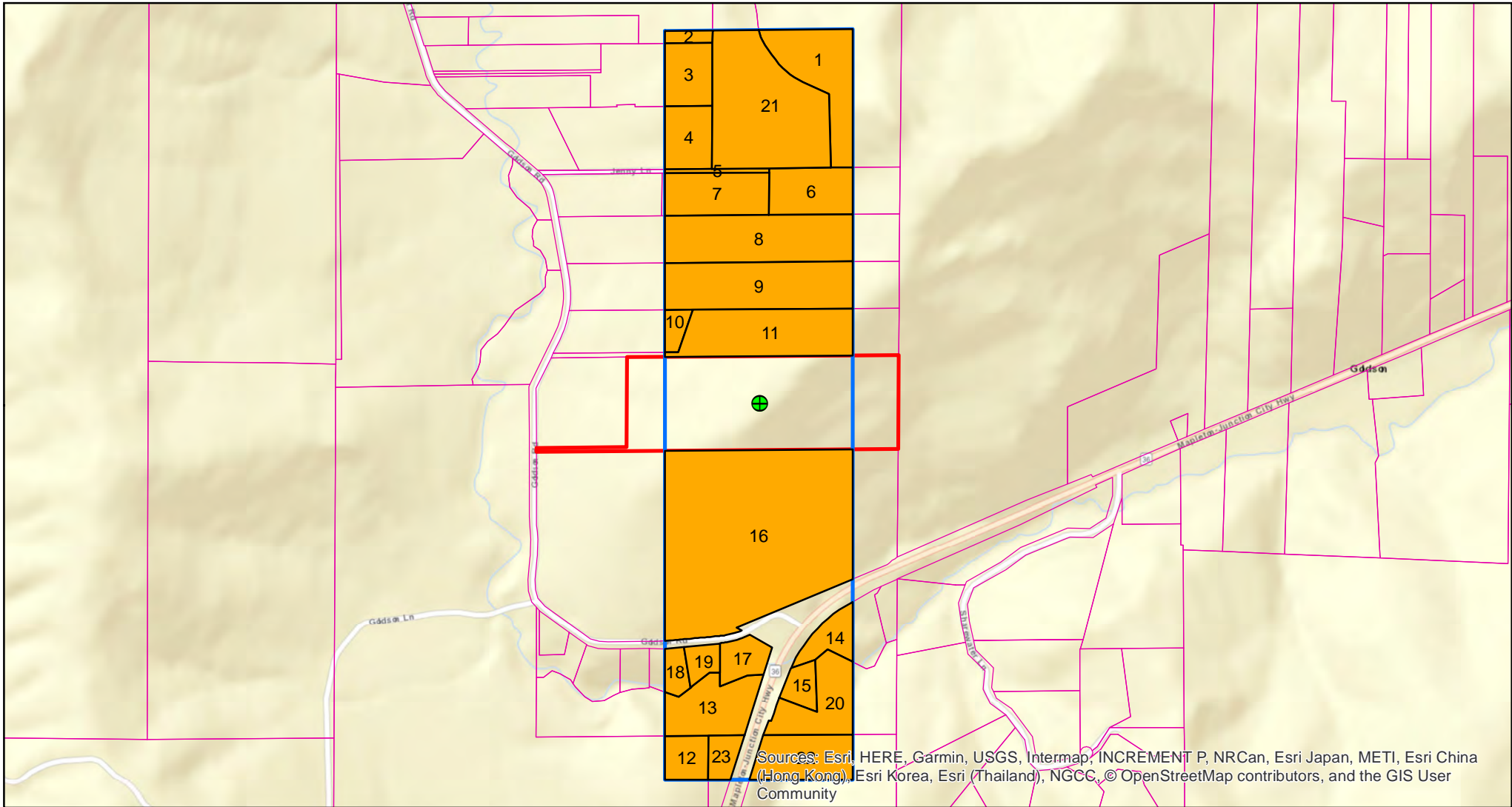


KJ OLSEN REVOCABLE LIVING TRUST
Tax Lot 1500, T16S, R6W
Lane County, Oregon
29.4 Acres m/l



Sources: Esri, HERE, Garmin, USGS, Intermap, INCREMENT P, NRCan, Esri Japan, METI, Esri China (Hong Kong), Esri Korea, Esri (Thailand), NGCC, © OpenStreetMap contributors, and the GIS User Community



1 inch = 1,000 feet

Unofficial Template Overlay
(23 tax lots)

