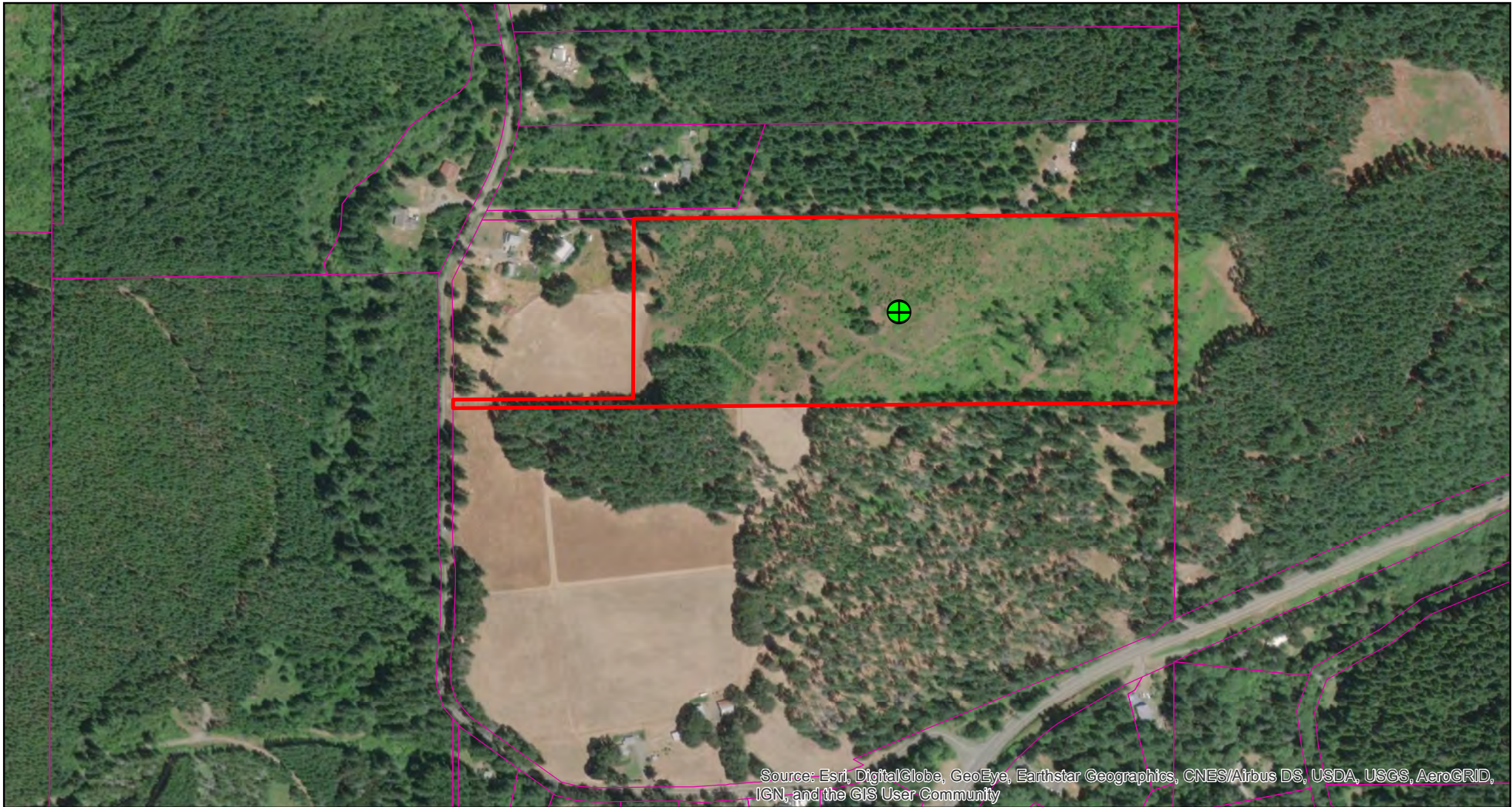


KJ OLSEN REVOCABLE LIVING TRUST
Tax Lot 1500, T16S, R6W
Lane County, Oregon
29.4 Acres m/l



Source: Esri, DigitalGlobe, GeoEye, Earthstar Geographics, CNES/Airbus DS, USDA, USGS, AeroGRID, IGN, and the GIS User Community



1 inch = 500 feet